

# heartfelt

INSPIRE.  
CREATE. PLAY.

**Store Hours**  
Monday - Saturday 10 am to 5 pm  
Sunday Noon to 4 pm  
612.877.8090  
[www.heartfeltonline.com](http://www.heartfeltonline.com)

JANUARY 2019

4306 UPTON AVENUE SOUTH MINNEAPOLIS, MN 55410 PHONE> 612.877.8090 WWW.HEARTFELTONLINE.COM

## PRESCHOOL WINTER FESTIVAL \*\*\*Advance registration required\*\*\*

**Wednesday January 30th or Thursday January 31st 10:30 to 11:30 am**



We will celebrate winter while children make a little landscape with fluffy cotton "snow", embellished with pinecones, little stones, and branches. Grown-ups will paint a small wooden snowman to add to the scene. We will finish with a wholesome snack. For ages 2 1/2 and older with a grown up. All ages are welcome. \$18; \$10 for each additional child per family.

**Please register in advance by calling 612-877-8090 or in person at the shop.**

**Pioneer Festival:** Wed Feb 27th or Thurs Feb 28th  
**Spring Festival:** Wed March 20th or Thurs March 21st  
**Bunny Festival:** Wed April 17th or Thurs April 18th  
**Bee Festival:** Wed May 22nd or Thurs May 23rd

## January Anytime Crafts

We always have a menu of crafts available on a drop-in basis--no need to sign up ahead of time. Come on in and craft with us!

### ICE FLOE WITH PENGUINS

Make a miniature South Pole scene, stacking and painting branch slices to make the floating ice. Add a family of peg penguins. Ages 7 and up. \$28.



**FELTED POLAR BEAR**  
Learn to needle felt while making this cute little bear. Sharp needles will be used. Ages 9 to adult. \$24.



### SNOWMAN

Paint a wood snow person, then add a scarf, carrot nose, and other features. Ages 6 and up; can be simplified for younger children. \$10.



### HEART MOBILE

Needle felt a handful of fuzzy hearts using cookie cutters and a sharp felting needle, then hang from a branch. Ages 8 to adult. \$20.



### WINTER SPORTS DOLLS

Even peg dolls love winter sports! Ages 6 to adult. \$12 each.



### ICE QUEEN

Her dress glimmers and so do her cape and crown. Choose any skin color you wish. Ages 5 to adult. \$18.

### WATERCOLOR HEART

Color a large wood heart, then add glitter and a ribbon for hanging. Older children & adults may embellish with strings of crystal beads. Plain heart for all ages. \$10. With sparkly beads for ages 9 to adult. \$20.



### FELT BALL

Wool is an amazing fiber! Make a felted ball using your hands and warm soapy water. All ages. \$12.



### MINT TIN MOUSE

Sew a little felt mouse, then make her a cozy bed in a box. Ages 7 to adult. \$18.

### LITTLE HOUSES

Now with peg doll included.  
♥ Regular size ages 7 to adult. \$28.

- ♥ Mini house for ages 3 to 7
- Painted & glittered only \$12
- With added decorations \$18

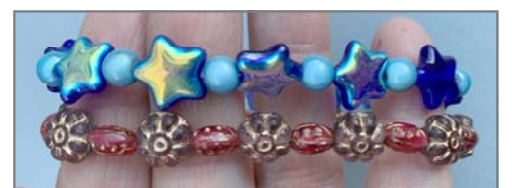
### PEG PENGUINS

Use acrylics to paint these Emperor Penguins. Ages 7 to adult; design can be simplified for younger children as needed. Large \$12. Small \$8. Pair \$18.



### BEADED BRACELET

Design a unique jewelry piece, choosing from our selection of glass beads. Ages 7 to adult. \$15.



# More Anytime Crafts



## WATERCOLOR PAINTING

Use our vivid pan watercolors to create your own piece of art. Painting is such a soothing activity! All ages. \$5.

## WOODEN BOXES

Pretty and practical storage. All ages.

- ♥ Small box \$12
- ♥ Medium box \$15
- ♥ Large box \$20
- ♥ Chest of drawers. \$25
- ♥ Compartment box \$28



## CAT FAMILY

Meow! All ages. \$28.



## TISSUE PAPER LANTERN

Cut hearts or other shapes from tissue paper to make this pretty decoupage lantern. Young children may need cutting help. Ages 3 to adult. \$15.



## PEG PEOPLE

Design your own! All ages. Large \$10. Small \$4. Tiny \$2.



## UNICORNS

All ages. Large \$15. Baby \$8. Unicorn & Rider \$24.



## WOODEN WEAPONS

Personalize historical weaponry using a variety of paints and crayons. Ages 4 and up.

- ♥ Dagger \$15.
- ♥ 12" Sword \$22.
- ♥ 19" Sword \$24.
- ♥ Shield \$28..



## WOOD DINOSAUR

Several types available. All ages. \$12.



## WOOD BEADS

Paint nine chunky wood beads, then string into a necklace. All ages \$12.



## FLEECE DOG CLASS

SATURDAY FEBRUARY 16TH 10 AM TO 1 PM

\*\*\*Advance Registration Required\*\*\*



Lisa combines two of her absolutely favorite things in this class--dogs and working with wool! Have you done some needle felting and want to go on to a more advanced project? We will learn wire armature and wool wrapping techniques while needle felting a small dog. **For adults & older children age 11+.** Class fee is \$40 and includes all materials and instruction. Payment is due at time of registration. Call or visit the shop to sign up.

### Class Preparation Notes

Some needle felting experience is a prerequisite for this class. If you haven't felted before, please do one of our needle felting drop-in crafts at the shop before the day of the class.

Bring several photos of the dog or dog breed you wish to make, including a good shot of the dog's head and one of the whole body from the side. Paper copies are preferable to phone photos.



# Fairy Treehouses

Our most popular project, a treehouse is fun to make and a fantastic play toy too. Most treehouses take several sessions to complete. Treehouse gift certificates are available too. Or wrap up just the house for gift giving, then come back with your child to decorate. We usually have built treehouses in stock but please call ahead if you have a specific size in mind.

- ♥ Bungalow Two levels \$48
- ♥ Mini Three smaller levels \$48
- ♥ Triplex Three Levels \$68
- ♥ Mansion Four Levels \$88
- ♥ Refurbish or add a level to your existing treehouse \$28. More complex renovations \$38.

Coming soon: Treehouse Villa!



Two Level Bungalow



Three Level Triplex



Four Level Mansion

**heartfelt**  
INSPIRE.  
CREATE. PLAY.

### Store Hours

Monday - Saturday 10 am to 5 pm

Sunday Noon to 4 pm

612.877.8090

[www.heartfeltonline.com](http://www.heartfeltonline.com)

## Heartfelt Birthdays

We love parties! See our birthday flyer or website for complete information about our parties. Then call 612.877.8090 to discuss specific plans for your child's party.

